



# ARCEPOCIII

Annual Review of Congresses EN EPOC

Descubriendo lo nuevo en EPOC presentado en ATS, ERS y SEPAR

## ERS - Mepolizumab reduces exacerbations in eosinophilic COPD

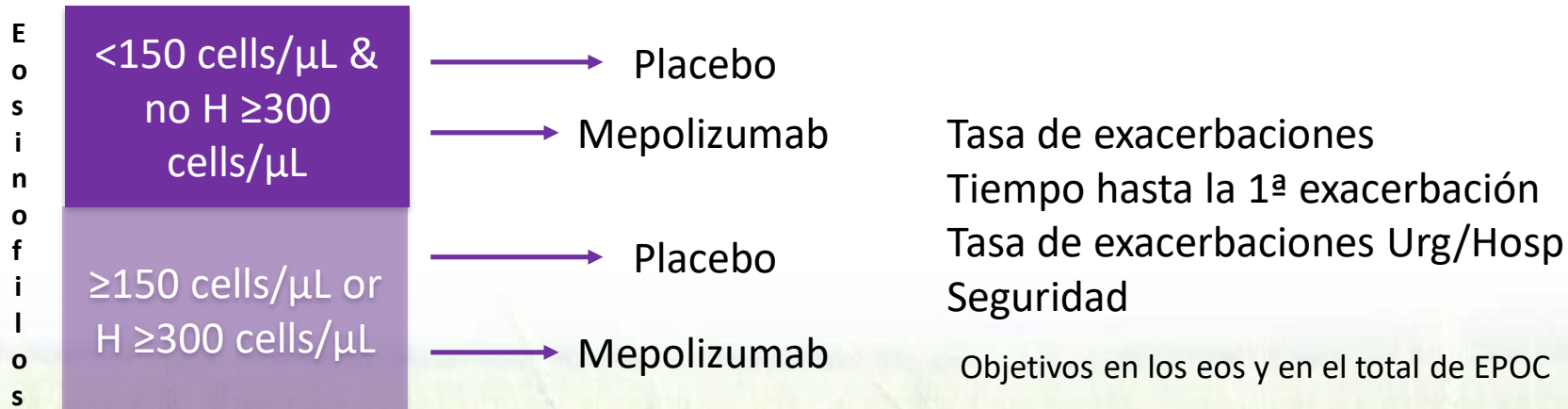
Sciurba F.

## Introducción

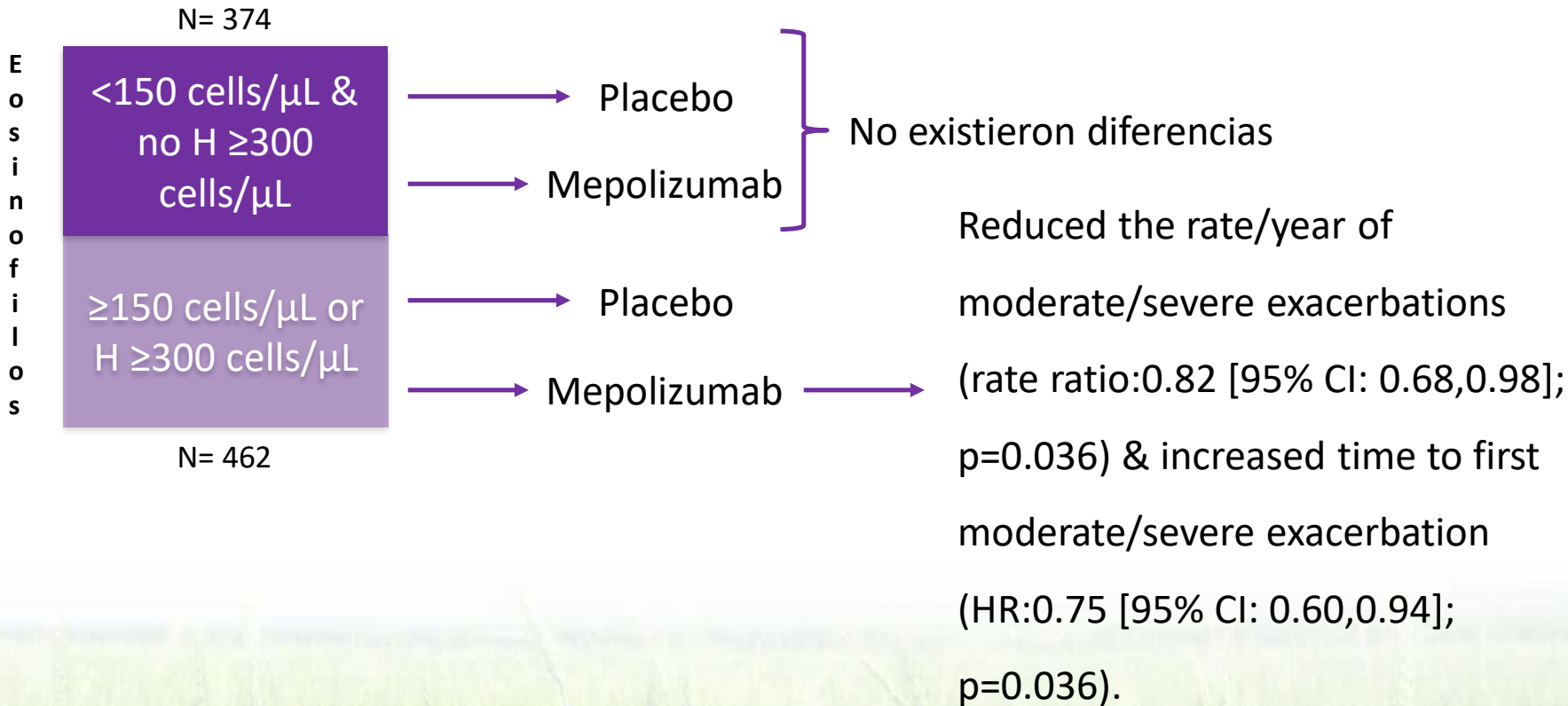
Ver la eficacia del mepolizumab en las enfermos con EPOC y eosinofilia

## Métodos

Estudio en fase III, vs placebo y doble ciego. EPOC exacerbadores en tratamiento.



# Resultados



## Conclusiones

There was a clinically relevant & statistically significant reductions in moderate/severe exacerbation rate/year & increased time to first exacerbation were seen with MEP vs PBO in patients with EOS-COPD. MEP was well tolerated. The data support blood EOS as a biomarker for COPD treatment response to MEP.



## Discusión

ORIGINAL ARTICLE

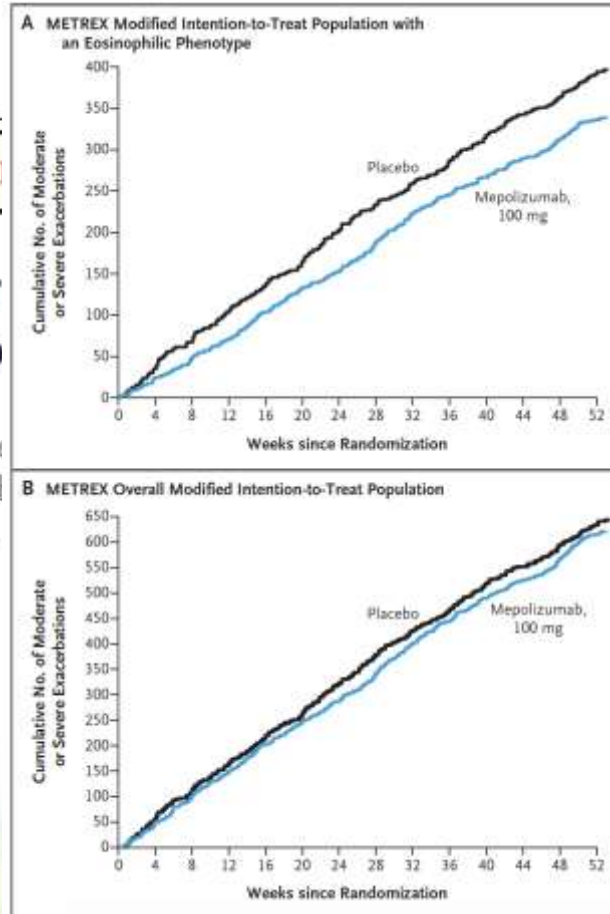
### Mepolizumab for Eosinophilic Chronic Obstructive Pulmonary Disease

I.D. Pavord, P. Chanez, G.J. Criner, H.A.M. Kerstjens, S. Korn, N. Lugogo, J.-B. Martinot, H. Sagara, F.C. Albers, E.S. Bradford, S.S. Harris, B. Mayer, D.B. Rubin, S.W. Yancey, and F.C. Sciurba

I.D. Pavord, P. Chanez, G.J. Criner, J.-B. Martinot, H. Sagara, F.C. Albers, D.B. Rubin, S.W. Yancey, and F.C. Sciurba

#### Figure 3. Cumulative Incidence of Moderate or Severe Exacerbations.

Numbers of moderate or severe exacerbations were tallied in each trial group during the 52-week trial period and plotted over time.



## Discusión

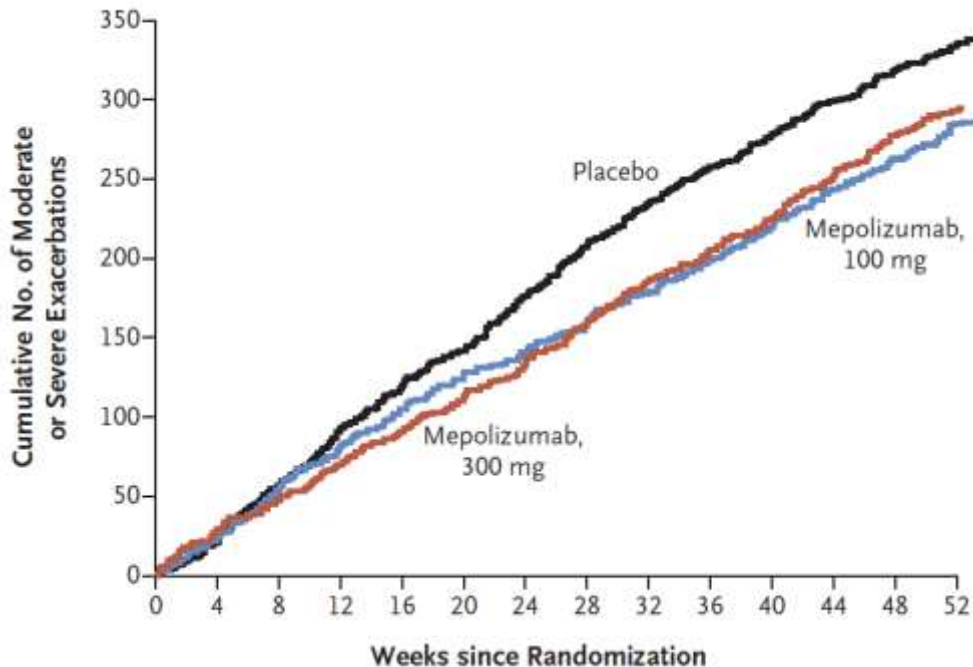
ORIGINAL ARTICLE

### Mepolizumab for Eosinophilic Chronic Obstructive Pulmonary Disease

I.D. Pavord, P. Chanez, G.J. Criner, H.A.M. Kerstjens, S. Korn, N. Lugogo, J.-B. Martinot, H. Sagara, F.C. Albers, E.S. Bradford, S.S. Harris, B. Mayer, D.B. Rubin, S.W. Yancey, and F.C. Sciruba

spectively) (Fig. 3B and Table 2). In METREO, the mean annual rate of moderate or severe exacerbations was 1.19 per year in the 100-mg mepolizumab group and 1.27 per year in the 300-mg mepolizumab group, as compared with 1.49 per year in the placebo group (rate ratio [100 mg vs. placebo], 0.80; 95% CI, 0.65 to 0.98; adjusted  $P=0.07$ ; rate ratio [300 mg vs. placebo], 0.86; 95% CI, 0.70 to 1.05; adjusted  $P=0.14$ ) (Fig. 3C and Table 2). Because the results in

C METREO Modified Intention-to-Treat Population



The image features the Ferrer logo, which consists of a stylized 'F' icon in teal and lime green, followed by the word 'ferrer' in a bold, black, lowercase sans-serif font. The logo is centered in the upper half of the frame. The background is a vibrant landscape of a green field with several stalks of grain in the foreground, under a bright blue sky filled with scattered white clouds. The entire scene is framed by a solid purple border.

**ferrer**