



ARCEPOCIII

Annual Review of Congresses EN EPOC

Descubriendo lo nuevo en EPOC presentado en ATS, ERS y SEPAR

ERS - Blood eosinophils in COPD: long term variability and clinical outcomes

Graziella Turato, Umberto Semenzato, Maria Martinez, Davide Biondini, Mariaenrica Tinè, Jose M Marin , Marina Saetta, Manuel G.

Introducción

Background. It is believed that high blood eosinophils are important indicators of poor prognosis and increased exacerbations in COPD. However, variability and long term role of these cells in COPD is not known.

Aim Long term investigation of the variability and the possible role of blood eosinophils in clinical outcomes of smokers with and without COPD.

Blood Eosinophils and Exacerbations in Chronic Obstructive Pulmonary Disease

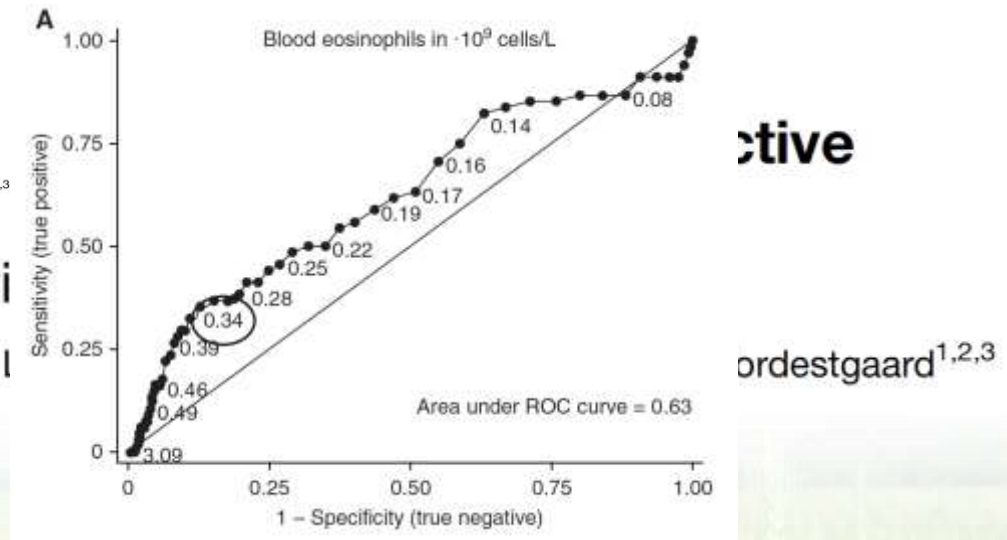
The Copenhagen General Population Study

Signe Vedel-Krogh^{1,2,3}, Sune F. Nielsen^{1,2,3}, Peter Lange^{3,4,5}, Jorgen Vestbo⁶, and Borge G. Nordestgaard^{1,2,3}

Chronic Obstructive Pulmonary Disease

The Copenhagen General Population Study

Signe Vedel-Krogh^{1,2,3}, Sune F. Nielsen^{1,2,3}, Peter Lange^{3,4,5}, Jorgen Vestbo⁶, and Borge G. Nordestgaard^{1,2,3}



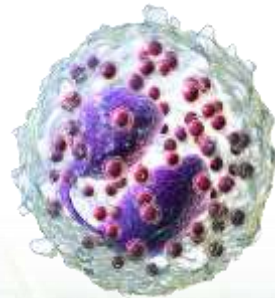
Métodos



5 años



Eosinofilia periférica
Función pulmonar
Exacerbaciones
Mortalidad

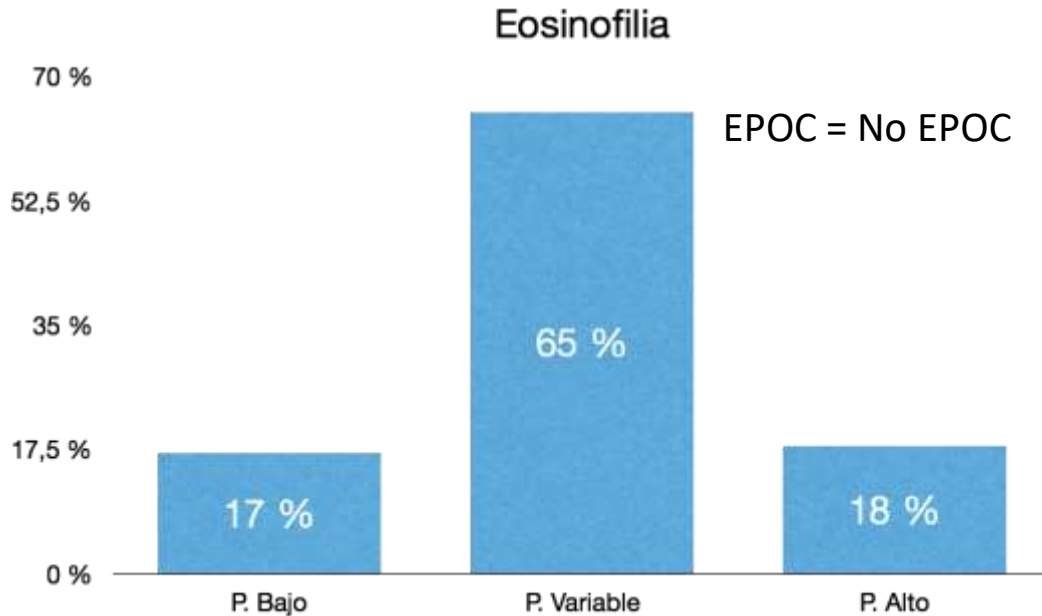


Persistently high (≥ 150 cells/ μL)

Persistently low (< 150 cells/ μL)

Variable ($<$ and > 150 cells/ μL)

Conclusions

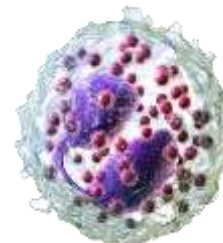


No difference was found among COPD subjects with high, low and variable eosinophils in: bronchodilator response, FEV1 decline, exacerbation and disease severity.

In COPD subjects a significant association between eosinophilia and mortality was not found. Therefore the use of eosinophils as a biomarker of bad prognosis is likely to be a premature hypothesis.

Resultados

Prevalence of persistent blood eosinophilia: relation to outcomes in patients with COPD



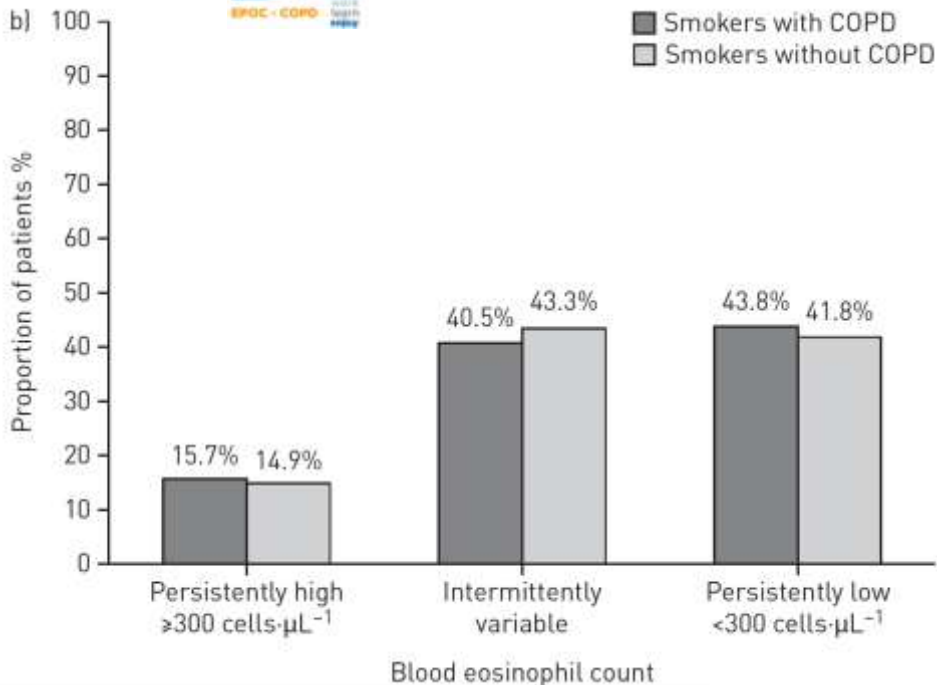
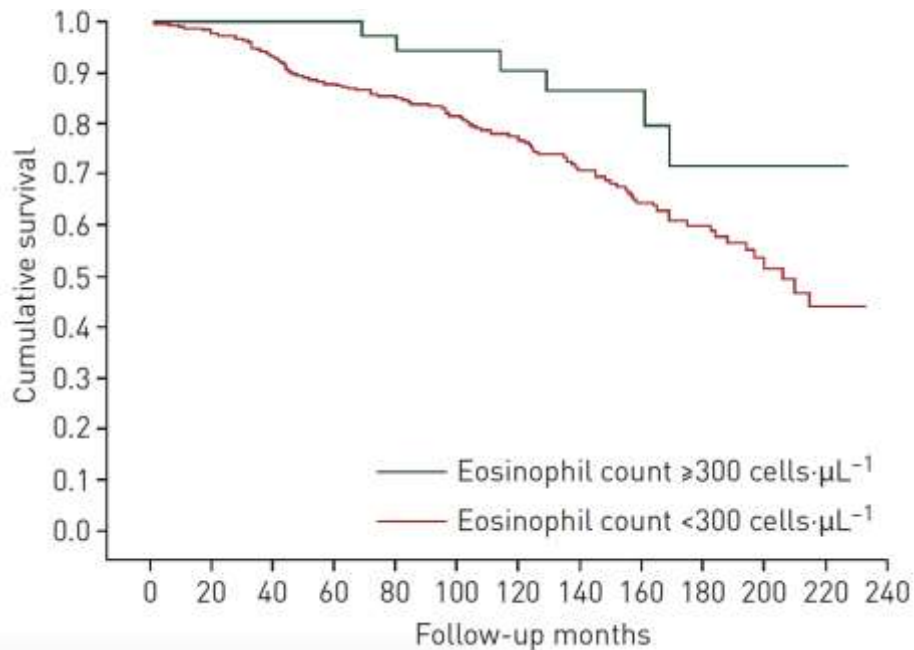
2 años

Eosinofilia periférica
Función pulmonar
Exacerbaciones
Mortalidad

Persistently high (≥ 300 cells/ μ L)
Persistently low (< 300 cells/ μ L)
Variable ($<$ and > 300 cells/ μ L)

Resultados

Prevalence of persistent blood eosinophilia: relation to outcomes in patients with COPD



The image features the Ferrer logo, which consists of a stylized 'F' icon in teal and green, followed by the word 'ferrer' in a bold, black, lowercase sans-serif font. The logo is centered in the upper half of the frame. The background is a vibrant landscape of a green field with several stalks of grain in the foreground, under a bright blue sky filled with scattered white clouds. The entire scene is framed by a solid purple border.

ferrer