

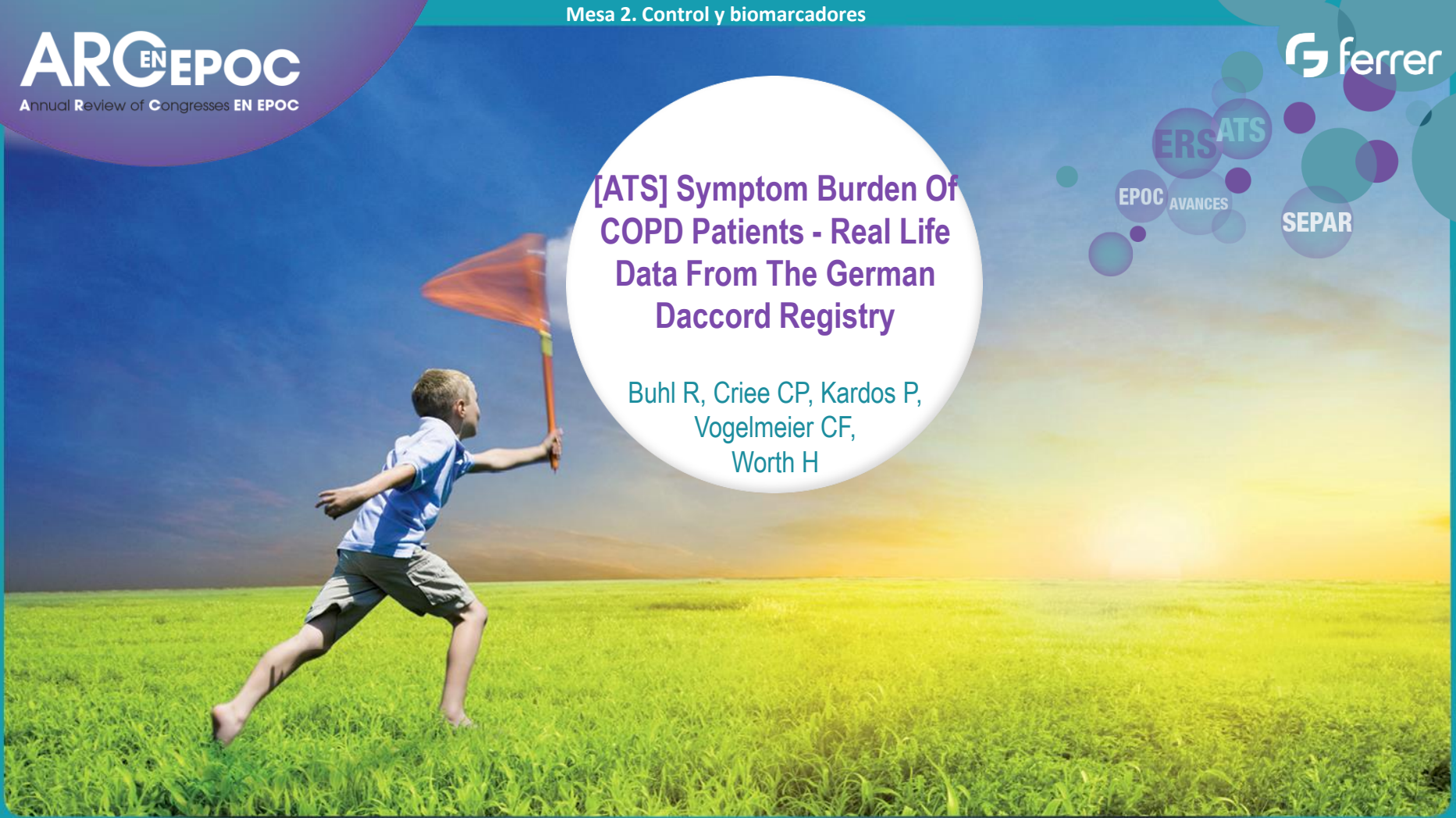
**[ATS] Symptom Burden Of
COPD Patients - Real Life
Data From The German
Daccord Registry**

Buhl R, Criece CP, Kardos P,
Vogelmeier CF,
Worth H

EPOC AVANCES

ERS ATS

SEPAR





Introduction

Patients' symptoms are the key parameters that drive therapeutic interventions in COPD. (O'Hagan P. et al., Curr Med Res Opin 2014; 30:301–14). So far, limited data have been published on COPD symptoms.

Methods

In the prospective, real-life DACCORD registry, 6,208 patients with COPD completed mMRC and CAT questionnaires and reported their COPD symptoms and co-morbidities at baseline.

Results



Mean age of the patients was 65.7 years (range 40-96 years), 45 % were younger than 65 years and 59.6 % were males. The number of patients reporting ≥ 1 exacerbation in the 6 months prior to documentation was 28 %.

- Free of symptoms : 3 %
- Dyspnea on exertion: 85 %
- Cough: 65 %, of these:
 - Dry cough: 39 %
 - Wet cough: 61 %
- Limitations of exercise tolerance 55 %
- Other: dyspnea at rest, chest tightness, wheezing or prolonged expiration: 20 %

Results



In subgroup analyses, patients with CAT <10 reported fewer symptoms than patients with CAT >30

	CAT < 10	CAT > 30
Dyspnea on exertion	75.7 %	90.4 %
Dyspnea at rest	5.1%	54 %
described their cough as productive	43%	66.5%
More than 3 symptoms	12 %	71%

Results



The vast majority of patients (>90 %) was primarily symptomatic during daytime and in the morning.

The most common co-morbidity was cardiovascular disease (CD, 52 % of total population).

In patients with CAT >30, the second most frequent co-morbidity were psychiatric disorders with a 4-fold higher incidence compared to patients with CAT < 10 (23,7 % vs 5,5 % respectively).



Conclusion

This extensive real-world study in Germany provides insights into COPD symptoms in a large patient population of over 6.000 patients. The most frequent COPD symptom reported was dyspnea on exertion. Patients with CAT <10 reported fewer comorbidities than patients with CAT >30. In a majority of patients, symptoms occur in the morning or during daytime and CD is the most common comorbidity.